

Piano

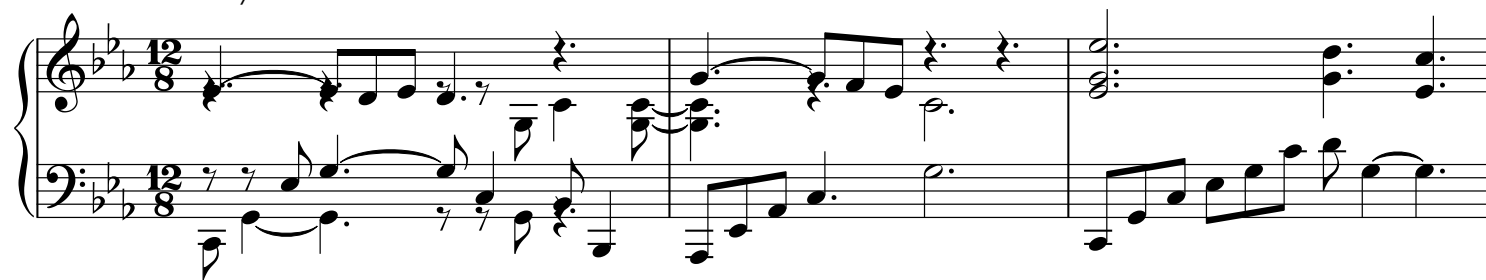
Есть в Палестине страшная гора

Т. Кардашова

4.0

А. Вакулич

$\text{♩} = 70$



19

21

23

mp

4 12

4 *mf* 12

mf

41

43

45

47

Measures 47-48 of a piano piece. The key signature has three flats (B-flat, E-flat, A-flat). Measure 47 features a complex texture with sixteenth-note runs in the right hand and a steady eighth-note accompaniment in the left hand. Measure 48 continues this texture with some chordal changes.

49

Measures 49-51. Measure 49 shows a shift in the right hand with more sustained chords. Measures 50 and 51 feature a more active right hand with eighth-note patterns, while the left hand maintains a consistent accompaniment.

52

Measures 52-54. Measure 52 has a melodic line in the right hand. Measures 53 and 54 show a more complex interplay between the hands, with the right hand playing sixteenth-note figures and the left hand providing harmonic support.

55

Measures 55-57. Measure 55 begins with a dense chordal texture. Measures 56 and 57 feature a more flowing melodic line in the right hand, with the left hand continuing its accompaniment.

58

Measures 58-59. Measure 58 has a melodic line in the right hand. Measure 59 features a more complex texture with sixteenth-note runs in the right hand and a steady eighth-note accompaniment in the left hand.

60

Measures 60-61. Measure 60 has a melodic line in the right hand. Measure 61 features a more complex texture with sixteenth-note runs in the right hand and a steady eighth-note accompaniment in the left hand. The piece concludes with a final chord in the right hand and a sustained note in the left hand.

65

Measures 65-66: Treble and bass staves. Measure 65 features a complex texture with many sixteenth notes and rests. Measure 66 continues with similar rhythmic patterns, including some beamed sixteenth notes and rests.

66

Measures 66-67: Treble and bass staves. Measure 66 shows a continuation of the complex texture with many sixteenth notes and rests. Measure 67 features a more active bass line with eighth notes and some beamed sixteenth notes.

67

Measures 67-68: Treble and bass staves. Measure 67 shows a continuation of the complex texture with many sixteenth notes and rests. Measure 68 features a more active bass line with eighth notes and some beamed sixteenth notes.

68

Measures 68-69: Treble and bass staves. Measure 68 shows a continuation of the complex texture with many sixteenth notes and rests. Measure 69 features a more active bass line with eighth notes and some beamed sixteenth notes.

70

Measures 70-71: Treble and bass staves. Measure 70 shows a continuation of the complex texture with many sixteenth notes and rests. Measure 71 features a more active bass line with eighth notes and some beamed sixteenth notes.

73

Measures 73-74: Treble and bass staves. Measure 73 shows a continuation of the complex texture with many sixteenth notes and rests. Measure 74 features a more active bass line with eighth notes and some beamed sixteenth notes.